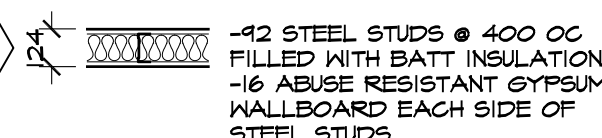


1 NEW B.A. PARKER ELEMENTARY SCHOOL
SCALE 1:100

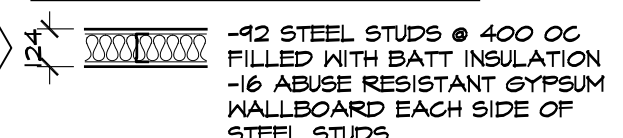
1 HOUR FIRE RATED STEEL STUD PARTITION
U.L.C. 944/27



-12 STEEL STUDS @ 400 O.C.
FILLED WITH BATT INSULATION
-16 ABUSE RESISTANT GYPSUM
WALLBOARD EACH SIDE OF
STEEL STUDS

NOTE: COMPLETE ASSEMBLY TO
EXTEND FROM FLOOR TO U/S OF
STRUCTURAL DECK ABOVE.
PROVIDE FIRE SEALANT ALONG
JOINT BETWEEN WALL AND
FLOOR. FILL CAVITY BETWEEN
WALL AND STRUCTURAL DECK
WITH BATT INSULATION AND
SEAL.

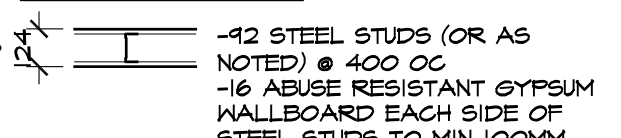
STEEL STUD ACOUSTICAL PARTITION



-12 STEEL STUDS @ 400 O.C.
FILLED WITH BATT INSULATION
-16 ABUSE RESISTANT GYPSUM
WALLBOARD EACH SIDE OF
STEEL STUDS

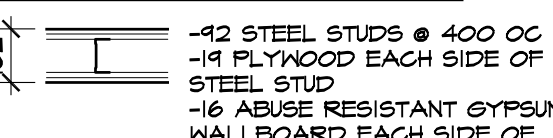
NOTE: COMPLETE ASSEMBLY TO
EXTEND FROM FLOOR TO U/S OF
STRUCTURAL DECK ABOVE.
PROVIDE SEALANT ALONG JOINT
BETWEEN WALL AND FLOOR.
FILL CAVITY BETWEEN WALL
AND STRUCTURAL DECK WITH
ACOUSTICAL BATT INSULATION
AND SEAL.

STEEL STUD PARTITION



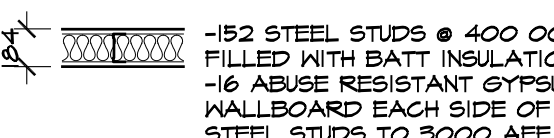
-12 STEEL STUDS (OR AS
NOTED) @ 400 O.C.
-16 ABUSE RESISTANT GYPSUM
WALLBOARD EACH SIDE OF
STEEL STUDS TO MIN 100MM
ABOVE FINISHED CEILING UNLESS
PARTITION FORMS PART OF A
FIRE SEPARATION EXTEND TO
UNDERSIDE OF STRUCTURAL
DECKING ABOVE

STEEL STUD PARTITION WITH BACKING



-12 STEEL STUDS @ 400 O.C.
-18 PLYWOOD EACH SIDE OF
STEEL STUD
-16 ABUSE RESISTANT GYPSUM
WALLBOARD EACH SIDE OF
STEEL STUD ON PLYWOOD

1 HOUR FIRE RATED STEEL STUD PARTITION
U.L.C. 944/27



-12 STEEL STUDS @ 400 O.C.
FILLED WITH BATT INSULATION
-16 ABUSE RESISTANT GYPSUM
WALLBOARD EACH SIDE OF
STEEL STUDS TO 3000 AFF.
BALANCE ABOVE 3000 CAN BE
REGULAR TYPE X GYPSUM
WALLBOARD

NOTE: COMPLETE ASSEMBLY TO
EXTEND FROM FLOOR TO U/S OF
STRUCTURAL DECK ABOVE.
PROVIDE FIRE SEALANT ALONG
JOINT BETWEEN WALL AND
FLOOR. FILL CAVITY BETWEEN
WALL AND STRUCTURAL DECK
WITH BATT INSULATION AND
SEAL.

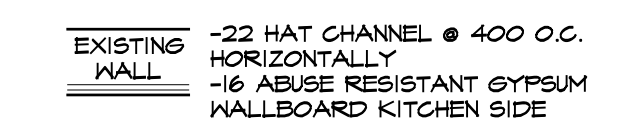
BLOCK INFILL PARTITION BETWEEN POOL
AND TEACHER LOUNGE



-254 MASONRY BLOCK
-22 HAT CHANNEL @ 400 O.C.
HORIZONTALLY ON TEACHER
LOUNGE SIDE
-16 ABUSE RESISTANT GYPSUM
WALLBOARD KITCHEN SIDE

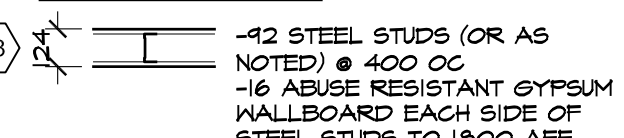
NOTE: HAT CHANNEL AND
GYPSUM BOARD TO BE
INSTALLED ON ENTIRE TEACHER
LOUNGE SIDE OF WALL, OVER
NEW INFILL AND EXISTING
MASONRY

REFACING OF EXISTING INTERIOR PARTITIONS



EXISTING
WALL
-22 HAT CHANNEL @ 400 O.C.
HORIZONTALLY
-16 ABUSE RESISTANT GYPSUM
WALLBOARD KITCHEN SIDE

STEEL STUD PARTITION



-12 STEEL STUDS (OR AS
NOTED) @ 400 O.C.
-16 ABUSE RESISTANT GYPSUM
WALLBOARD EACH SIDE OF
STEEL STUDS TO 1800 AFF

Project: Alterations to GCHS for the new
B.A. Parker Public School
GERALDTON, ONTARIO

EVANS BERTRAND HILL WHEELER
ARCHITECTURE INC.

date: _____
revision: _____

checked by: IH
project no: 0814
date plotted: _____
date revised: MARCH 19, 2010
dwg no: **A5**

FLOOR PLAN