

revision

date

EVANS BERTRAND HILL WHEELER  
ARCHITECTURE INC.

Project  
Alterations to GCHS for the new  
B.A. Parker Public School  
GERALDTON, ONTARIO

Site Plan

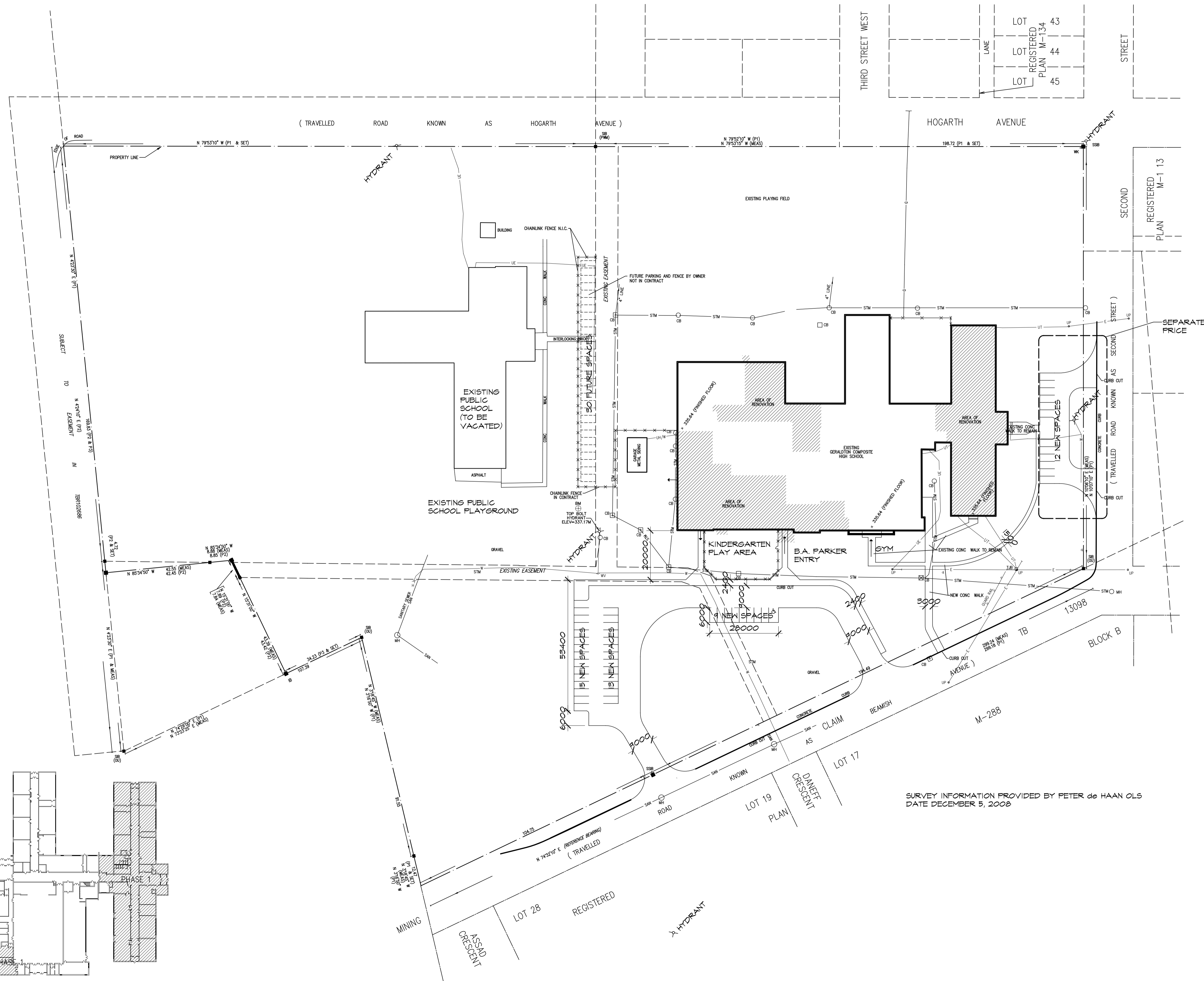
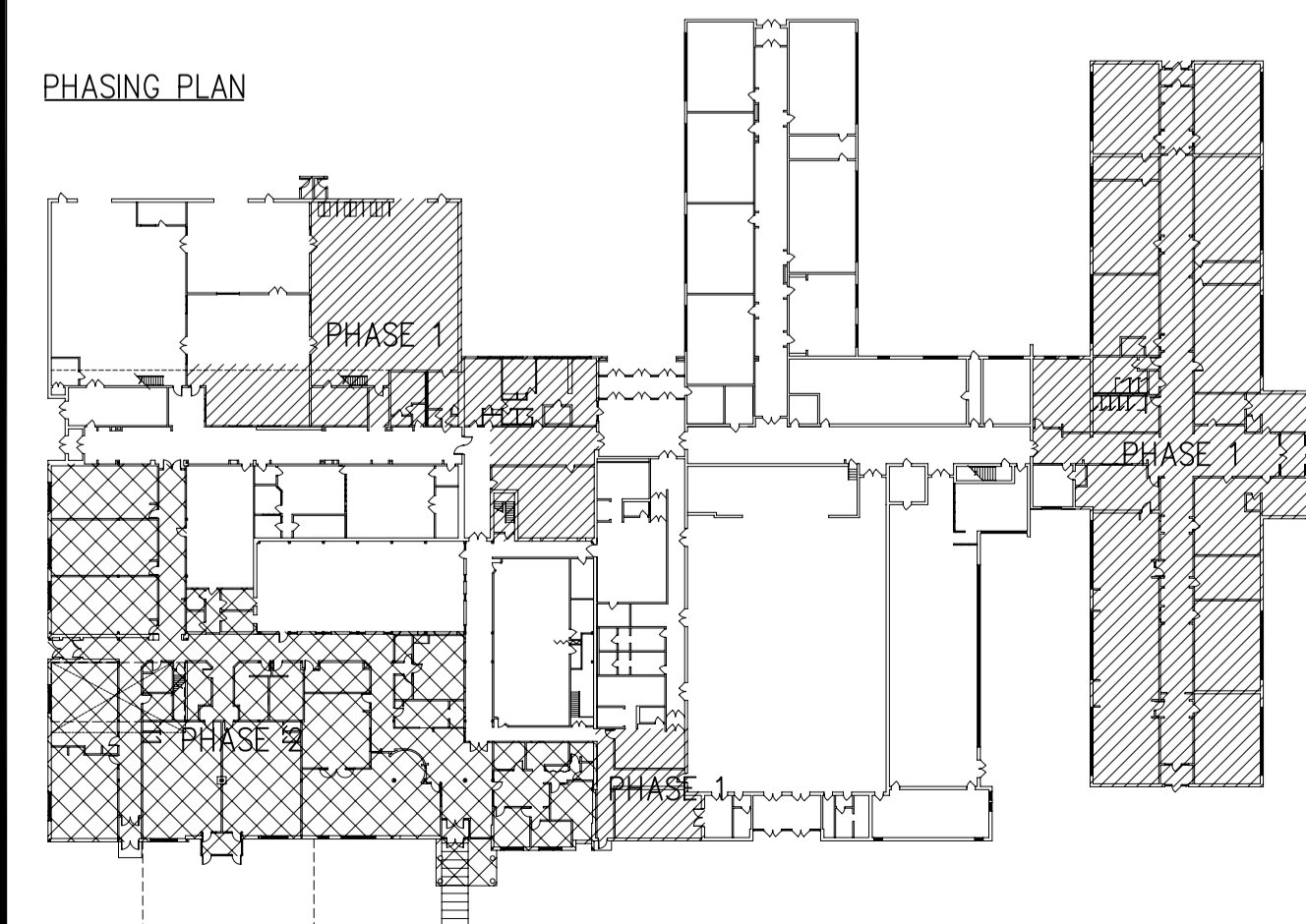
drawn by: MKW, AB  
checked by: IH  
scale: 1:750  
project no: 0814

date plotted:  
date revised:  
MARCH 19, 2010

dwg no:

**A1**

PHASING PLAN



SURVEY INFORMATION PROVIDED BY PETER de HAAN OLS  
DATE DECEMBER 5, 2008