

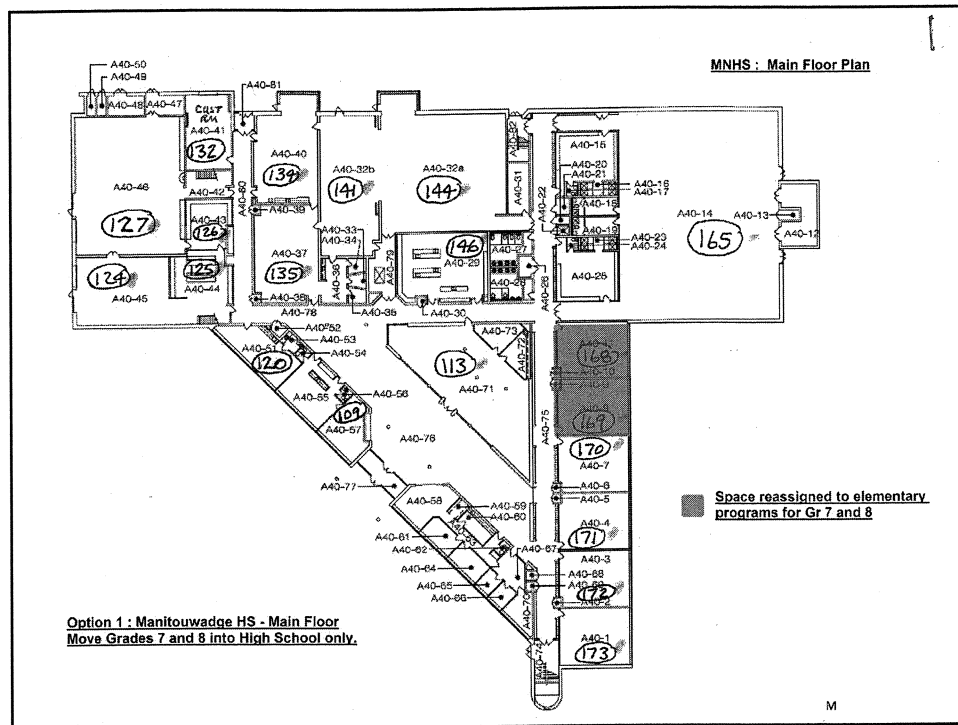
## **Presentation of Options**

**June 28, 2012**

### **OPTION 1 – Move Gr. 7 & 8 into MNHS with no reorganization of MNPS**

---

- ▶ No build or renovations required
  - ▶ Gr. 7 & 8 students have access to programming (shops and sports)
  - ▶ Students transition at a younger age
-



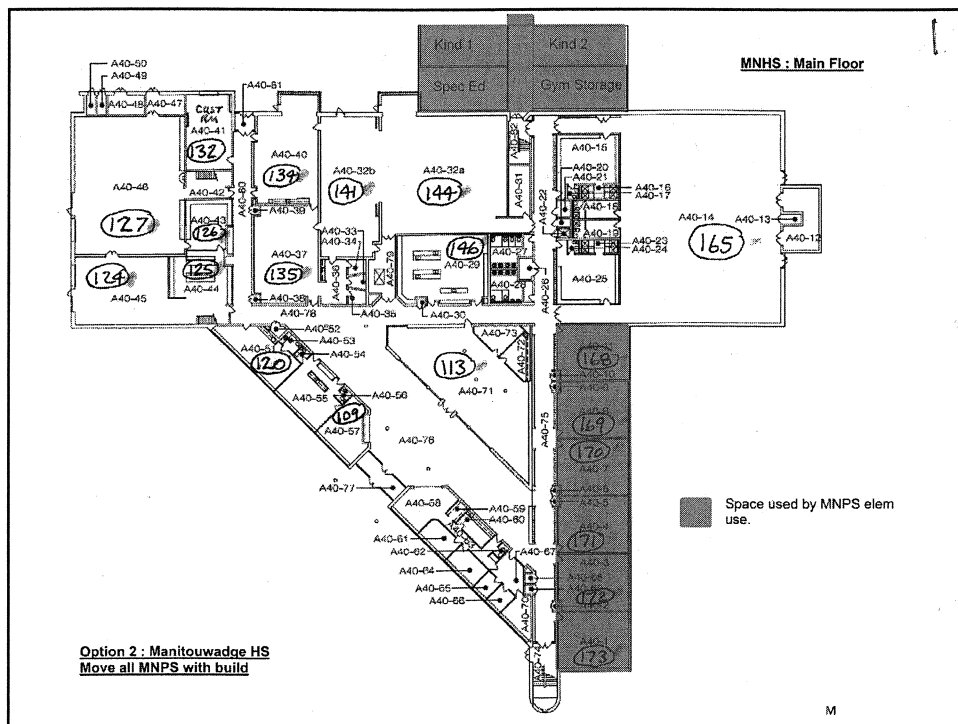
## OPTION 1 – Move Gr. 7 & 8 into MNHS

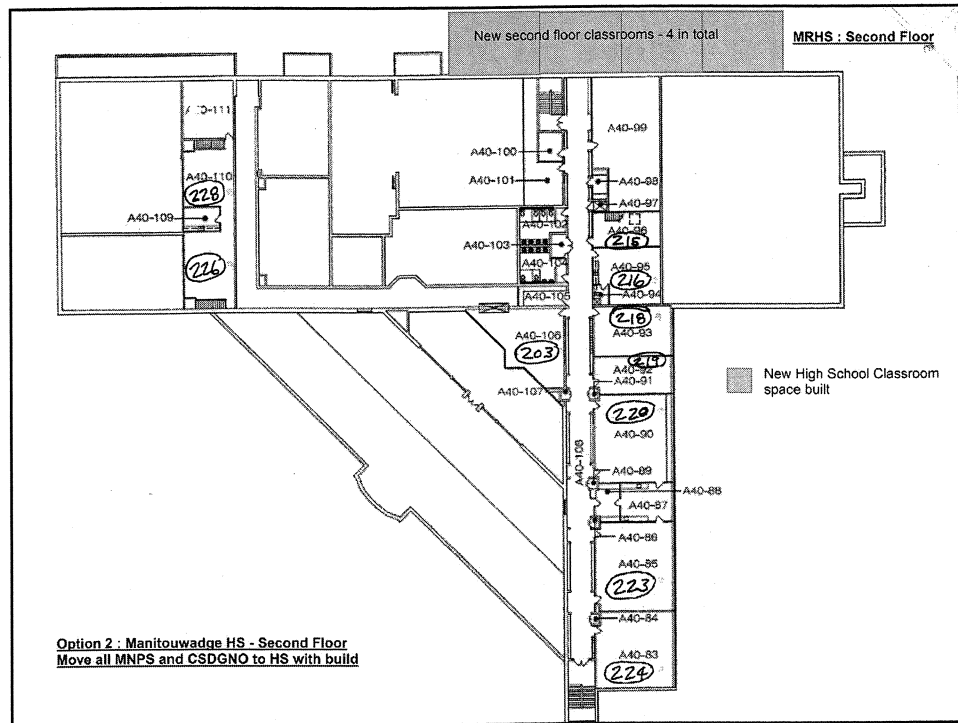
STRENGTHS

WEAKNESSES

## OPTION 2 – Move all MNPS into MNHS with Build

- ▶ Elementary students on the main floor
- ▶ Build required, subject to Ministry approval, to accommodate JK/SK rooms, Special Ed for elementary and secondary rooms on second floor
- ▶ Road access to be blocked
- ▶ JK/SK play area, elementary play area and soccer pitch
- ▶ Access to programming/seamless transition
- ▶ Estimated cost of build from past experience and changes to outside play area - \$3.38 million





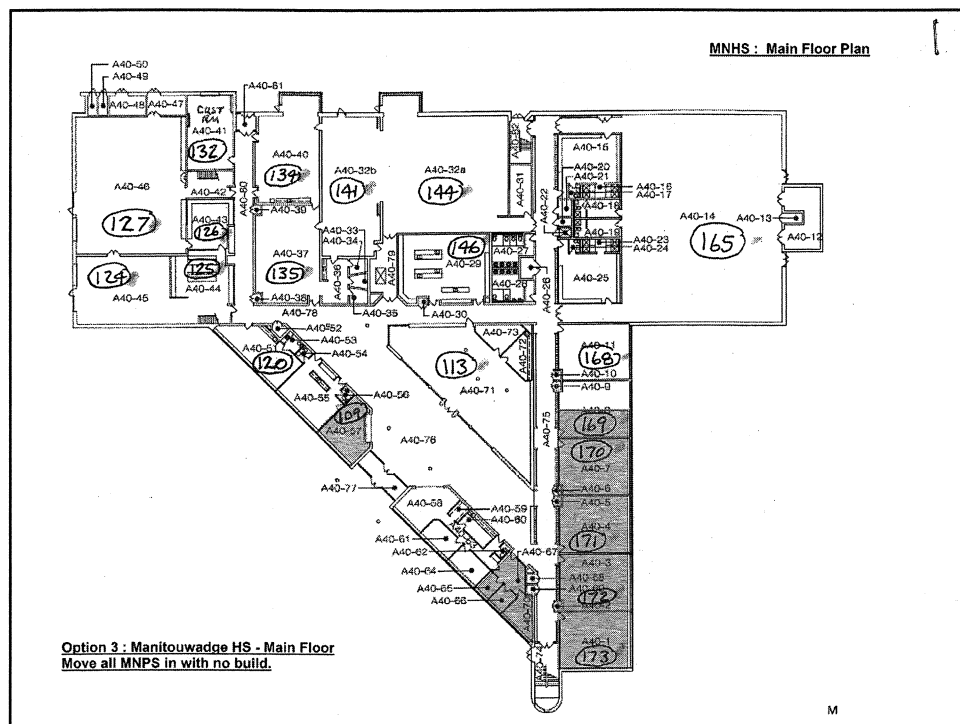
## OPTION 2 – Move all MNPS into MNHS with Build

### STRENGTHS

### WEAKNESSES

### OPTION 3 – Move all MNPS into MNHS without Build

- ▶ Elementary students on the main floor
- ▶ Road access to be blocked
- ▶ JK/SK play area, elementary play area and soccer pitch
- ▶ Access to programming/seamless transition
- ▶ Room conversions:
  - ▶ Convert 226/228 into computer lab
  - ▶ Convert 173,172,171 to elementary use
  - ▶ Create JK/SK room from 169/170
  - ▶ Convert current computer labs into regular HS classrooms
  - ▶ Remove wall between 218/219 to create regular classroom
- ▶ Estimated cost of Renovations: \$980,000



### **OPTION 3 – Move all MNPS into MNHS without Build**

---

#### **STRENGTHS**

#### **WEAKNESSES**

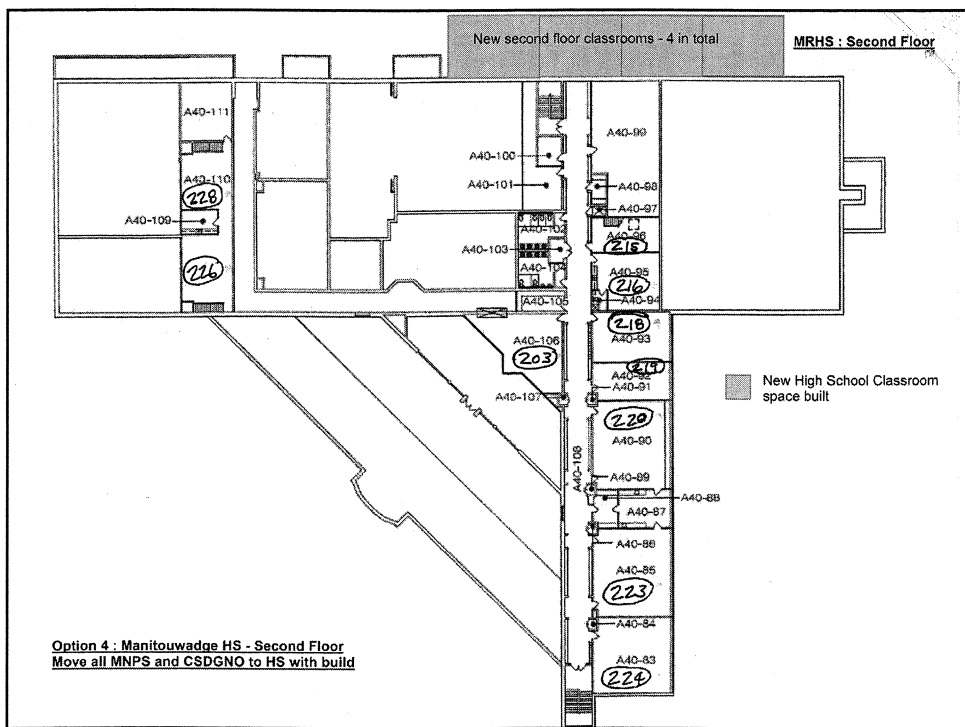
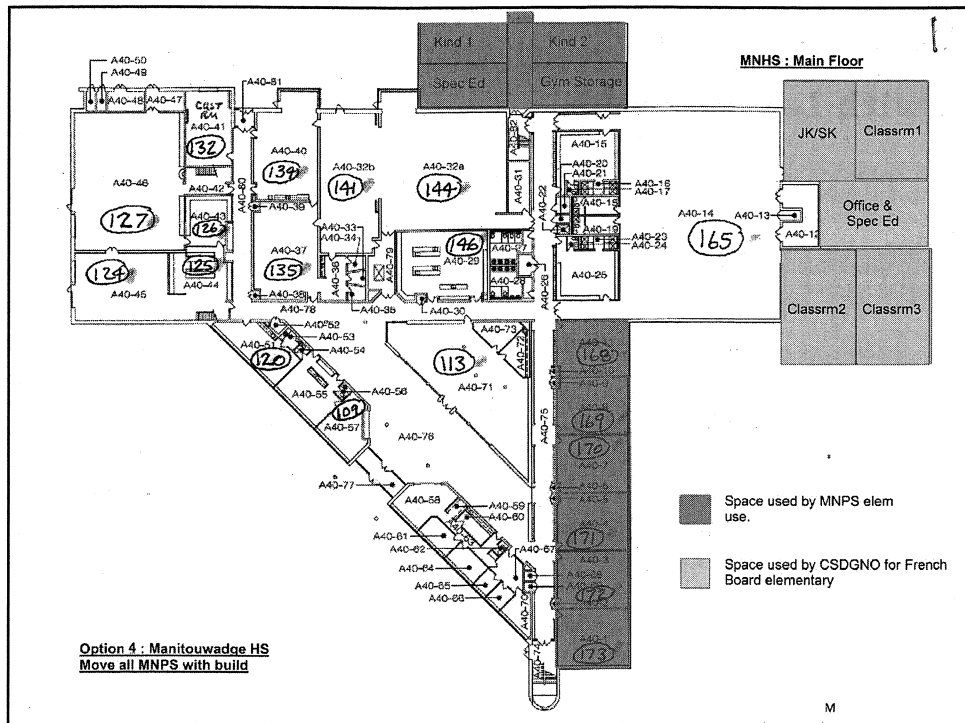


### **OPTION 4 – Move all MNPS into MNHS with Larger Build**

---

- ▶ Same as Option 2 but with room to accommodate other Boards if they so desire
- ▶ Estimated cost to build addition, playground, soccer pitch, subject to Ministry funding: \$4.72 million





### **OPTION 4 – Move all MNPS into MNHS with Larger Build**

---

#### **STRENGTHS**

#### **WEAKNESSES**



### **OPTION 5 – Move Gr. 7 & 8 into MNHS with Reorganization of MNPS**

---

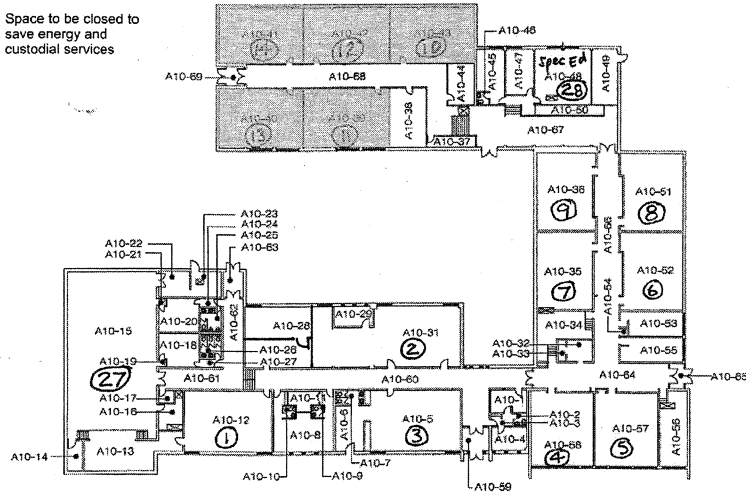
- ▶ What could be done to Option I to make it more feasible?
- ▶ Move MNPS into space that they need then lock down excess space and turn off the heat if alternate user can not be found
- ▶ No additional capital





# MANITOUWADGE PUBLIC SCHOOL - 2012 MEASUREMENTS

Space to be closed to save energy and custodial services



**Option 5 : Manitowadge PS**  
**Rooms to be closed to save energy with movement of Grades 7 & 8 to MNHS**

## **OPTION 5 – Move Gr. 7 & 8 into MNHS with Reorganization of MNPS**

**STRENGTHS**

**WEAKNESSES**

Combined Statements for  
MNPS and MNHS

Based on 2011/12 REVISED ESTIMATE Enrolments		No Change	Option1 - moving gr. 7 & 8 into MNHS building	Option2 - moving All students into MNHS building	Option3 - moving All students into MNHS without build	Option4 - moving All students into MNHS with LARGER build	Option5 - moving gr. 7 & 8 into MNHS building with reorg of MNPS
Revenue - Grants, Other Boards	3,279,332	3,054,844	2,339,271	2,229,648	2,447,531	3,054,844	
Expenses:							
CLASSROOM - TEACHERS, EAs, LIBRARY ATTENDANCE	2,491,646	2,492,031	2,366,281	2,366,281	2,366,281	2,492,031	
SCHOOL ADMINISTRATION	347,866	347,866	207,356	207,356	207,356	347,866	
PLANT OPERATIONS - CUSTODIAL, UTILITIES, MAINTENANCE	663,930	663,930	542,459	520,459	574,111	656,930	
TRANSPORTATION	26,935	26,935	26,935	26,935	26,935	26,935	
Total Expenses	3,530,377	3,530,762	3,143,031	3,121,031	3,174,683	3,523,762	
Net Financial Position to the Board	-251,045	-475,918	-803,760	-891,383	-727,152	-468,918	

Presented to Pubic Meeting #3 - June  
28, 2012