



## SUPERIOR-GREENSTONE DISTRICT SCHOOL BOARD

### **APPENDIX A: School Information Profile (SIP) - Red Rock Public School**

District staff is required to develop a School Information Profile (SIP) and complete the SIP for each school under review. The SIP is intended to ensure that the Board and the community are well-informed about the schools under review. The data contained within the SIP is intended to support a consideration of the schools based on their value to the students, the Board, the community and the local economy. Each school's value to the student takes priority over other considerations about the school.

<b>School Name:</b>	Red Rock Public School	
<b>School Address</b>	46 Salls Street, Red Rock, ON P0T 2P0	
Program Offering	Year One/Two (Kindergarten) to Grade Four	
Regular Track	Yes	
Specialized (please provide type)	None	

FACILITY PROFILE	
<b>Maps of the Facility</b>	
Site plan and floor plan(s) of the school with the date of construction and any subsequent additions.	See below – page 5 and 6
Context map (or aerial photo) of the school indicating the existing land uses surrounding the school.	See below – page 7
School Attendance Boundary Map	See below – page 8
Planning map of the school with zoning, Official plan or secondary plan land use designations.	Not available at this time
<b>Facility Details</b>	
Year Constructed	1972
Size of permanent structure in m2	2,105 m2
Site Size in hectares	2.15 Ha
Number of Classrooms	9 including Kindergarten room
List Specialized Spaces (i.e., Gym, Science Room, Offices, etc.)	Gym, Library, Child Care Centre, various offices
List available outdoor play areas (i.e., soccer field, track, playground)	Grassed playground, soccer pitch, running track, play structures, ballfield
Area of outdoor greenspace/surfaced outdoor play area	8,400 m2
School utility costs (totals, per square foot, and per student)	Utilities = \$43,788 (\$1.93 per sq. ft.; \$3,128 per student)  Other operating costs* = \$28,087 (\$1.20 per sq. ft.; \$2,006 per student)  *Other operating costs include custodial and maintenance

	supplies, inspections and snow removal
Number of parking spaces on site at the school and an assessment of the adequacy of the parking	14 plus. Meets needs currently.
Bus/car access and egress	Parking lot and loop through lot for bus unload/load.
Student drop-off and pick-up area on site	Front street for parents cars, or parking lot loop.
A measure of the proximity of the students to their existing school, and the average distance to the school for students.	Bussed = 7.4 km Not bussed = 0.6 km
Percentage of students that are and are not eligible for transportation under the school board policy (longest, shortest and average length of bus ride times).	See attached:  Not eligible for bus = 79% Eligible = 21%

Measures identified and/or addressed for accessibility of the school for students, staff and the public with disabilities (i.e., barrier free):

Red Rock PS is equipped with powered door operators on the main entrance to enhance barrier free access to the school. Minor modifications have been made to washrooms to accommodate wheelchair or other mobility bound staff, students, and the public. However, these measures were carried out many years ago, to the existing fixtures, and do not provide a fully accessible service. Future reconstruction of washrooms would be required order to provide full service.

Current Facility Condition Index (FCI) with a definition of what the index represents:

FCI means Facility Condition Index and is a calculated number that refers to the condition of the building according to the Ministry of Education. The factors used in the formula for FCI calculation are known renewal needs for the next 5 years from site inspections carried out by consultants engaged by the Ministry of Education, and contained in the Ministry online program VFA. VFA Facility is a Web-based Capital Planning and Management Software (CPMS™) system that empowers an organization with a central, accessible source of information about facility assets.

Red Rock PS has an FCI rating of 0.48 and under the rating scale shows to be in poor condition.

FCI = (Deferred Maintenance Costs) divided by (Current Replacement Value), with the following chart outlining what the number means with regard to the rated condition of the building:

GOOD:	0.0 to 0.1
FAIR:	0.1 to 0.3
POOR:	0.3 to 0.65
CRITICAL:	0.65 to 1.0

10-Year History of Major Facility Improvements (Item and Cost)

<b>Facility Improvement</b>	<b>Year</b>	<b>Cost</b>
Asbestos removal	2014/15	\$15,031
Hardware and door re-keying – part2	2014/15	\$12,082
Hardware and door re-keying – part 1	2013/14	\$22,219
Replaced stage system	2013/14	\$14,342
Partial flooring replacement	2012/13	\$17,340
Exterior door upgrades	2012/13	\$19,950
Fire alarm upgrade	2011/12	\$16,065
Roof repairs	2011/12	\$10,660
Side walk in front year	2010/11	\$16,856
Replacement flooring	2009/10	\$11,986
Roof repairs	2007/08	22,604

<b>Facility Improvement</b>	<b>Year</b>	<b>Cost</b>
Repair to brick and roof parapet edge	2007/08	54,982
Computer lab relocation, ventilation, millwork	2006/07	\$19,102
Repair to brick and roof parapet edge	2006/07	\$19,626
Millwork in classrooms	2006/07	\$11,233
Painting	2006/07	\$11,504
Replace Plumbing Fixtures	2006/07	\$17,346
Replace Interior Lighting	2006/07	\$18,227
Replace self contained AHU	2006/07	\$130,987
Controls replacement	2006/07	\$68,975
Secondary transformer replacement-orginal bldg	2006/07	\$29,039

*5-Year Facility Renewal Needs (Item and Cost)*

<b>Facility Improvement</b>	<b>Year</b>	<b>Cost</b>
Roof replacement – phase1	2016/17	\$250,000
Roof replacement – phase2	2017/18	\$250,000
Electrical upgrade	2018/19	\$20,000
Flooring replacement	2018/19	\$20,000
Block patch and paint – phase1	2018/19	\$20,000
Block patch and paint – phase2	2019/20	\$20,000
Domestic water pipe replacement – phase1	2019/20	\$30,000
Domestic water pipe replacement - phase2	2020/21	\$30,000
Exterior brick	2020/21	\$35,000

<b>INSTRUCTION PROFILE</b>		
<b>Staffing</b>		
	Teaching Staff	2 FTE 0.31 Teaching Vice-Principal
	Non-Teaching Staff	Lunch Room Supervisor
	Support Staff	0.2 Library Tech 1.0 Secretary 1.0 Head Custodian
	Itinerant Staff	Mental Health Nurse
	Administrative Staff	Off-Site Principal (Nipigon-Red Rock District High School) 0.69 On-Site Vice Principal (with two System Responsibilities)
Current Grade Configuration		Year One-Grade 1 Grade 2-Grade 4
Course and Program Information		Year One – 3 Year Two – 1 Grade One – 2 Grade Two – 2 Grade Three – 2 Grade Four – 3  (As of January 1, 2017, one grade four student and one grade two student are expected to move to Dorion).  Special Education Support

Specialized Services (e.g. cooperative placements, guidance counselling, etc.)	Mental Health Nurse
Number of out-of-area students	0
Number of self-identified First Nation Students	10 students
Percentage of students accessing special education services	30%
Current extra-curricular activities	No programs run currently as no volunteers and limited students.
Utilization Factor/Classroom Usage	7.1%

5-Year Historic Enrolment by Program and Summed to The School Level

<b>Program</b>	<b>2015-2016</b>	<b>2014-2015</b>	<b>2013-2014</b>	<b>2012-2013</b>	<b>2011-2012</b>
Regular	14	18	20	27	29.5
<b>Total Enrolment (A)</b>	14	18	20	27	29.5
<b>OTG (B)</b>	196	196	190	190	190
<b>Utilization (A/B)</b>	7.1%	9.2%	10.5%	14.2%	15.5%

OTG - On the Ground Capacity

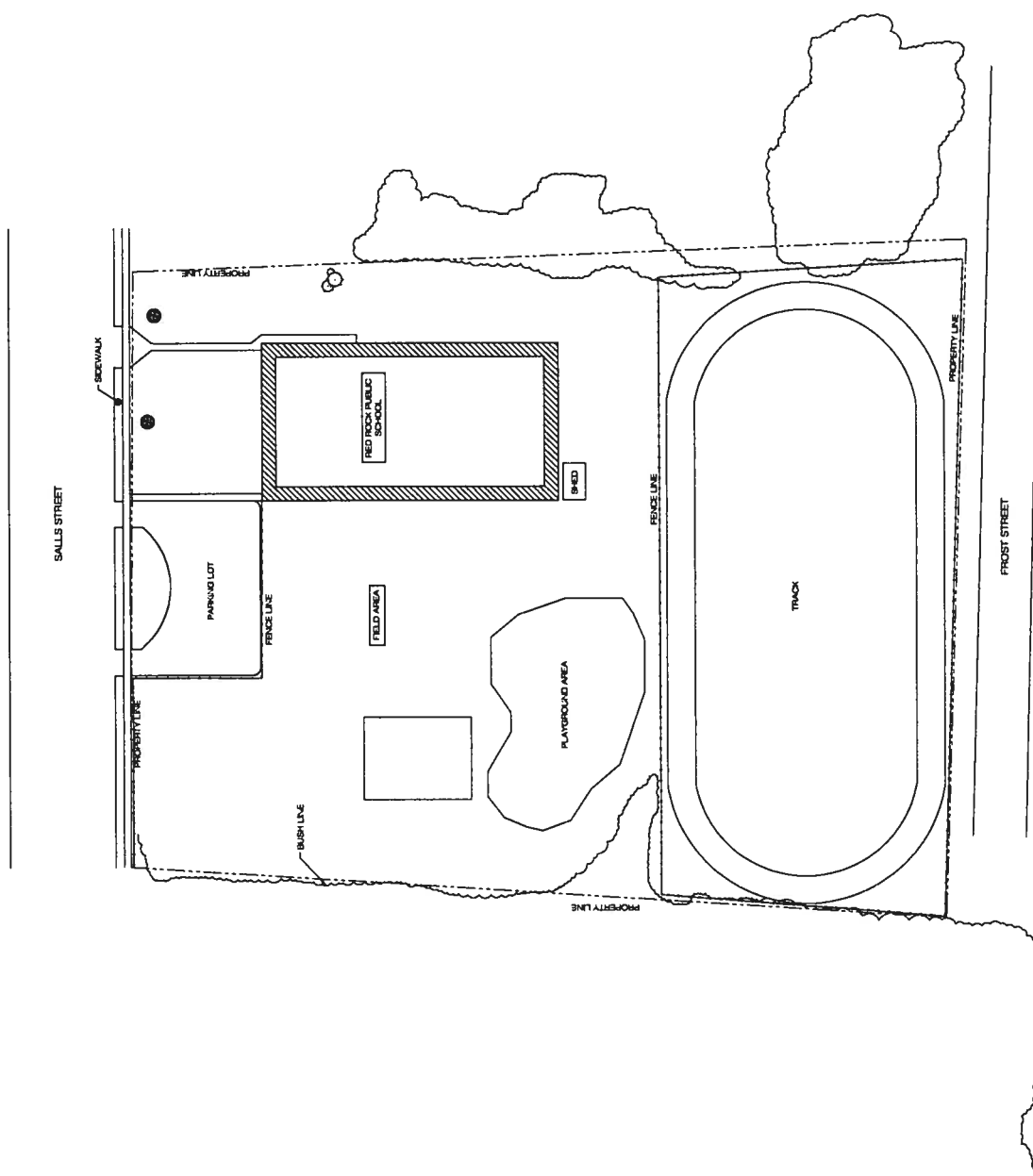
Actual enrolment for current year and projected enrolment (10 years) by program and summed to the school level

<b>Program</b>	<b>2016-2017</b>	<b>2017-2018</b>	<b>2018-2019</b>	<b>2019-2020</b>	<b>2020-2021</b>	<b>2021-2022</b>	<b>2022-2023</b>	<b>2023-2024</b>	<b>2024-2025</b>	<b>2025-2026</b>	<b>2026-2027</b>
Regular	14	11	10	9	8	7	6.5	6	5	4.5	4
<b>Total Enrolment (A)</b>	14	11	10	9	8	7	6.5	6	5	4.5	4
<b>OTG (B)</b>	196	196	196	196	196	196	196	196	196	196	196
<b>Utilization (A/B)</b>	7.1%	5.6%	5.1%	4.6%	4.1%	3.6%	3.3%	3.1%	2.6%	2.3%	2.0%

OTG – On the Ground Capacity;

<b>OTHER SCHOOL USE PROFILE</b>	
Current non-school programs or services resident at or co-located with the school as well as any revenue from these non-school programs or services and whether or not it is at full cost recovery.	3 classrooms are being used for Board staff/Leads.
Current facility partnerships as well as any revenue from the facility partnerships and whether or not it is at full cost recovery.	Ontario Early Years Center – Drop in Program: \$7,261 revenue for 2015/16 based on cost recovery
Community use of school as well as any revenue from the community use of the school and whether or not it is at full cost recovery.	There is very little community use in this school and no revenues.
Availability of before and after school programs or services (e.g. child care) as well any revenue from the before and after school programs and whether or not it is at full cost recovery.	Before and After School Care has been deemed not viability due to lack of students.
Description of the school's suitability for facility partnerships.	The school building would provide a very good partnership opportunity as it is located in the downtown area of Red Rock The various rooms are all accessed from the main hallways and can be separately keyed. The current child care centre is well set up with separate entrances. There is a kitchen area that has a separate door to the hallway.

# SITE PLAN



THIS SITE PLAN WAS CREATED USING EXISTING DOCUMENTATION AND IS NOT A LEGAL SURVEY. THIS DRAWING IS FOR REFERENCE ONLY.

Scale	AS NOTED
Designer	JD
Checked By	RRPS17-2
Date	09/12
Project No.	2012016
Sheet No.	1/58

RED ROCK PUBLIC SCHOOL  
SITE PLAN

SUPERIOR GREENSTONE  
DISTRICT SCHOOL BOARD  
ASBESTOS SCHOOL NUMBERING SYSTEM

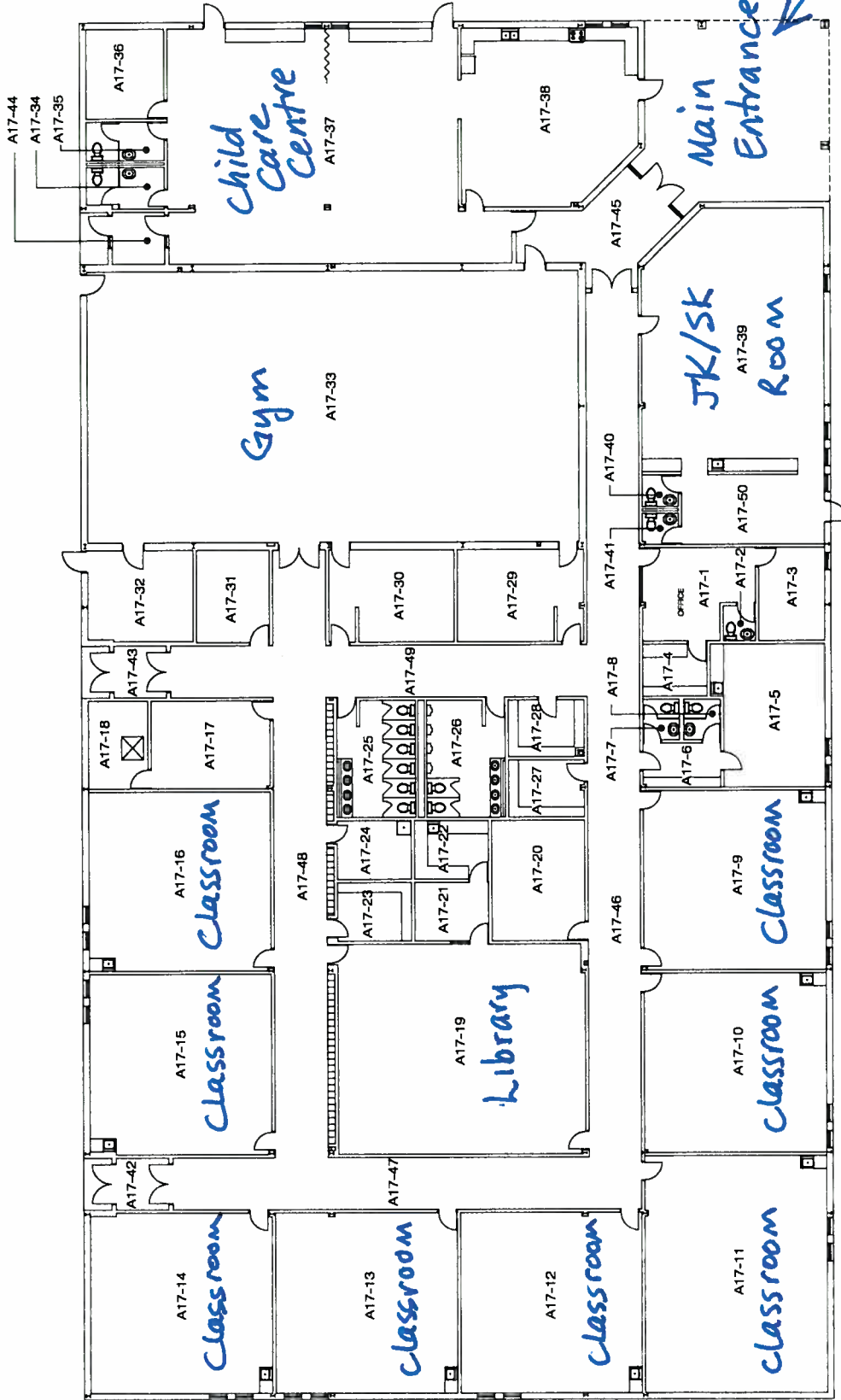
Scale	AS NOTED
Designer	JD
Checked By	RRPS17-2
Date	09/12
Project No.	2012016
Sheet No.	1/58

**JML Engineering**  
105 Lake Street, 2nd Floor  
Thunder Bay, ON P7A 7W5  
Phone: 807-341-1131  
Email: info@jmleng.com

No.	Description	By	Date
A	ISSUED FOR OWNER REVIEW	ULL	MAR 26 2012

Revisions

# FLOOR PLAN



AS NOTED	2012016	RRPS17-1
Drawn By: ILLJ/D	Check By: RRPS17	Rev. 5: 09/12
Project: 2012016	Client: RRPS17	Rev. 4: 09/12
Scale: 1/8" = 1'-0"	Scale: 1/8" = 1'-0"	Scale: 1/8" = 1'-0"

RED ROCK PUBLIC SCHOOL  
BASE FLOOR PLAN

SUPERIOR GREENSTONE  
DISTRICT SCHOOL BOARD  
ASBESTOS SCHOOL NUMBERING SYSTEM

151 15th Street, 2nd Floor  
Thunder Bay, ON P7A 7K5  
Phone: 807-345-1313  
Fax: 807-345-1314  
Email: info@jml-engineering.com

**JML Engineering**

No.	Description	By	Date
A	ISSUED FOR OWNERS REVIEW	ILL	MAR 28 2012

Aerial photo



